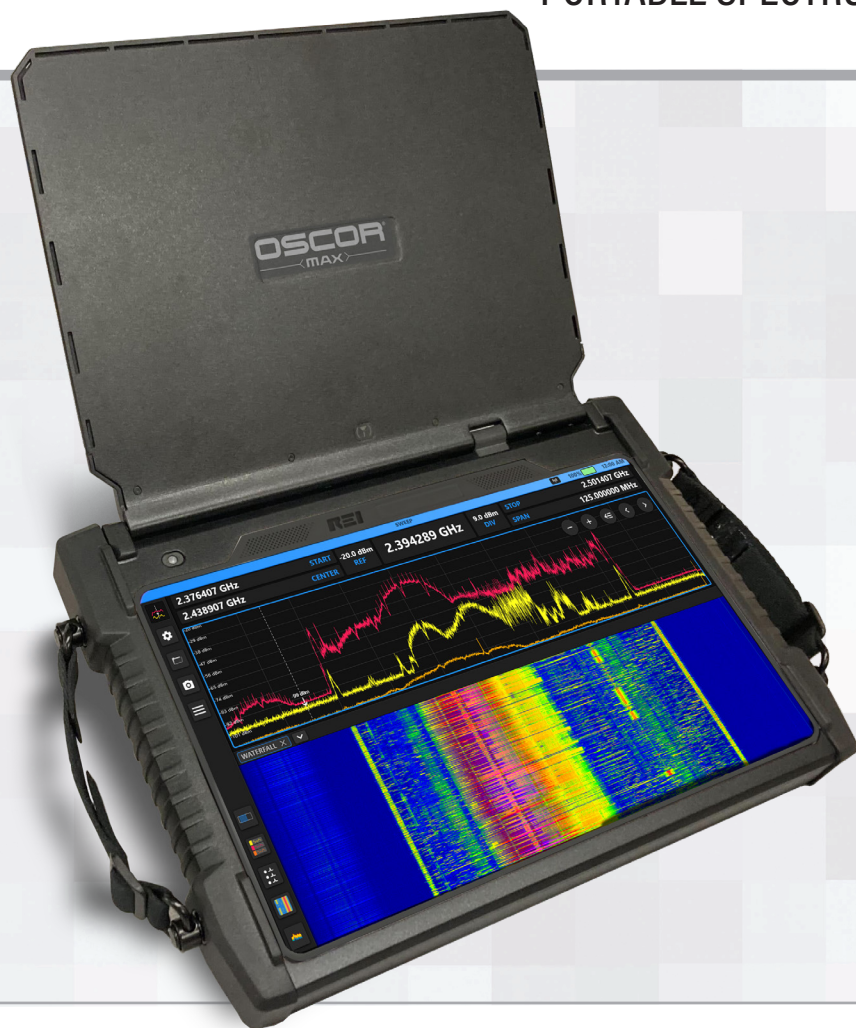


# COMING 2026

# OSCOR<sup>®</sup>

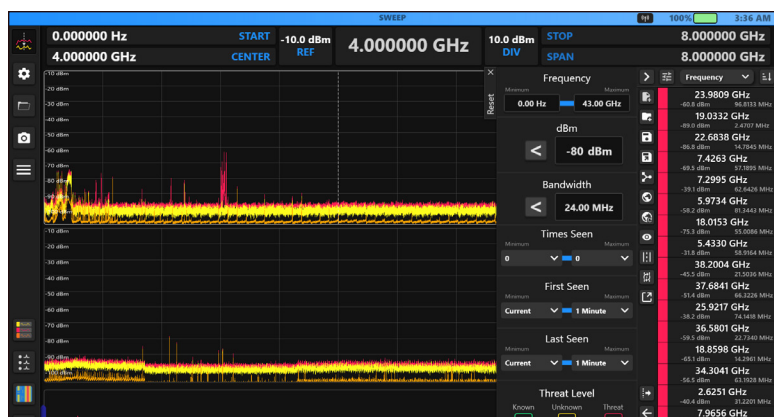
## <MAX>

### PORTABLE SPECTRUM ANALYZER



## Detect and Locate Electronic Transmitters up to 43GHz.

- Fully integrated auto-switching antenna panel, continuously sweeps/ displays 10 kHz - 43 GHz
- WiFi device detection
- Bluetooth device detection
- SmartBars™
- Discrete Bands
- I&Q Data Recording
- Multi- Purpose Probe (Carrier-Current, IR, Visible Light, Ultrasonic, Coax)



Spectrum view with Signal List

## Features

- 1100 GHz/sec at 10 kHz resolution
- 125 MHz IBW
- Weighs 10.4 lbs./4.7 kg
- Dual hot-swappable Li-ion batteries
- 13" Hi-res capacitive touchscreen

Product specifications and descriptions subject to change without notice. Packaging may vary depending on model purchased.

# PRODUCT SPECIFICATIONS

## RF SYSTEM

Frequency: 10 kHz to 43 GHz  
Sweep speed: 1100 GHz/sec (estimated)  
IBW: 125 MHz  
Preamp: 10 kHz-8 GHz: 15 dB  
Attenuation: 0 dB, -10 dB, -20 dB, -30 dB  
Dynamic Range: 90 dB

## ANTENNA SYSTEM

Built-in auto switching antenna system (10 kHz – 43 GHz) capable of performing 125 antenna switches per second.

## RF IN / IF OUT

Aux RF Inputs:

- 2.4 mm connector
- 2.92 mm Input [SMA compatible]

IF Output:

- SMA [375 MHz with 125 MHz BW]

## AUDIO

Demodulation types: AM, FM  
Built-in speakers  
Headphone output  
Audio input

## I/Q Recording

OSCOR Max can record and store I/Q data

## USER INTERFACE

13.3" Capacitive touchscreen display  
Gigabit Ethernet port

## STORAGE

2TB M.2 NVMe SSD  
Micro SD Card Slot  
USB 3 Type A Port

## POWER SOURCES

Universal Supply: 100–240 VAC,  
Removable Batteries: 2x Rechargeable Lithium ION  
USB-C PD Charging  
Runtime: 2.5 hours minimum

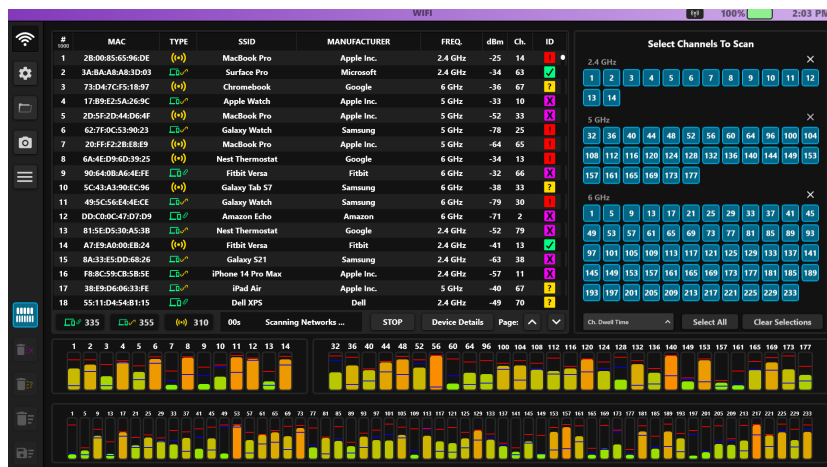
## ACCESSORIES

Multi-Purpose Probe (MPP)

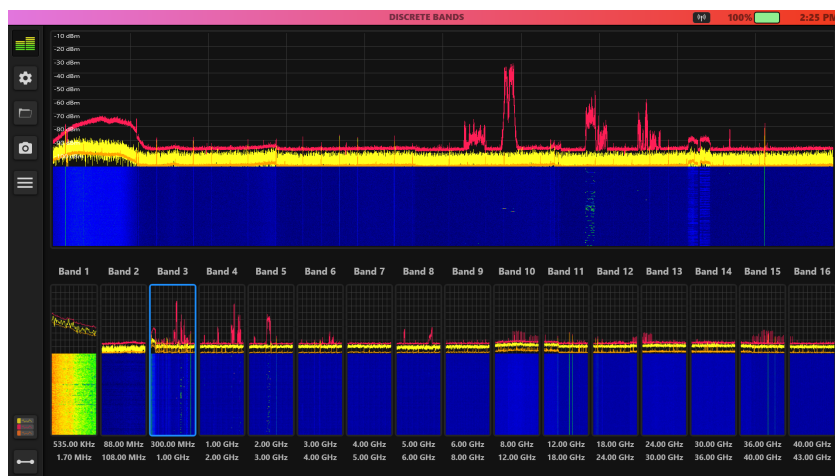
- IR
- Visible Light
- Ultrasonic
- Carrier Current
- Coax
- Magnetic Leakage

## MECHANICAL

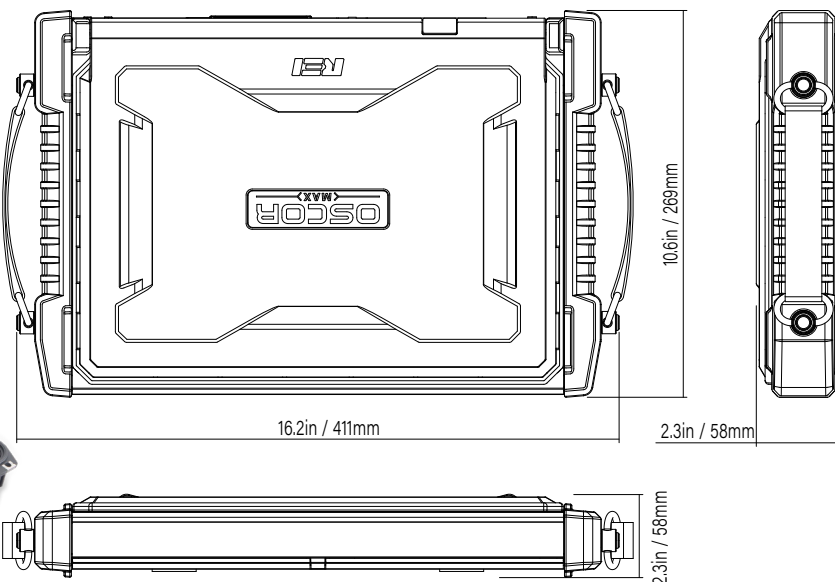
Dimensions:  
Length: 16.2 in / 411 mm  
Width: 10.6 in / 269 mm  
Depth: 2.3 in / 58 mm  
Unit Weight w/batteries  
(2): 10.4 lbs / 4.7 kg



WIFI and Bluetooth analysis.



Create multiple custom bands in Discrete Bands mode.



RESEARCH ELECTRONICS INTERNATIONAL  
455 SECURITY DRIVE, COOKEVILLE, TN 38506 USA  
TEL +1 931.537.6032 • 800.824.3190 (US ONLY) • FAX +1 931.537.6089  
sales@reiusa.net • www.reiusa.net